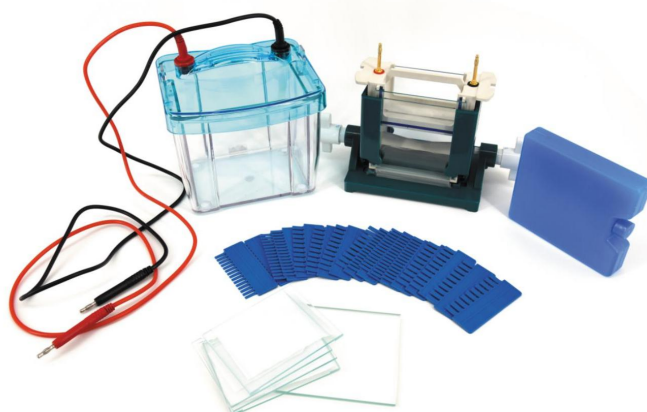


Model DYCZ-25D



Feature

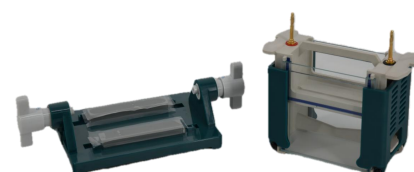
- With a gel casting in original position, able to cast and run the gel at the same place, simple and convenient to make gels, and save your precious time;
- Casting gel in original position: Install gel casting chamber in the main body of electrophoresis apparatus directly, able to cast and run the gel at the same place;
- Strong compatibility: Two different sizes of gel can be placed, able to separate samples that mini size gel can't do and improve samples' resolution;
- Simplified high-end product: Simplified design for operation requirements and clamping installation;
- High-quality materials with skilled technique: Casting mold with high strength PC material, which is solid and durable. High transparent tank, easy for observation;
- Heat dissipation design: Sufficient buffer can absorb heat, the V-shape protective strip for positive electrode ensures platinum wire and buffer have good contact to avoid heating. 1cm space kept in the bottom of tank can be placed magnetic rod to stir. With vents on the top lid, release the heat and water mist during running.

Application

For SDS-PAGE, Protein electrophoresis

Specification

Dimension (LxWxH)	175×163×165mm	
Gel Size (LxW)	73×83mm	95×83mm
Comb	10 wells and 15 wells	
Comb Thickness	1.0mm and 1.5mm	
Number of Samples	40-60	
Buffer Volume	1350 ml	
Weight	1.0kg	



Recommended Power Supply
DYD-6C/6D/8C/10C/12